

House & Land package
From \$428,930

From

Based on house \$260,430 and land \$168,500

Valid until 31 October 2018



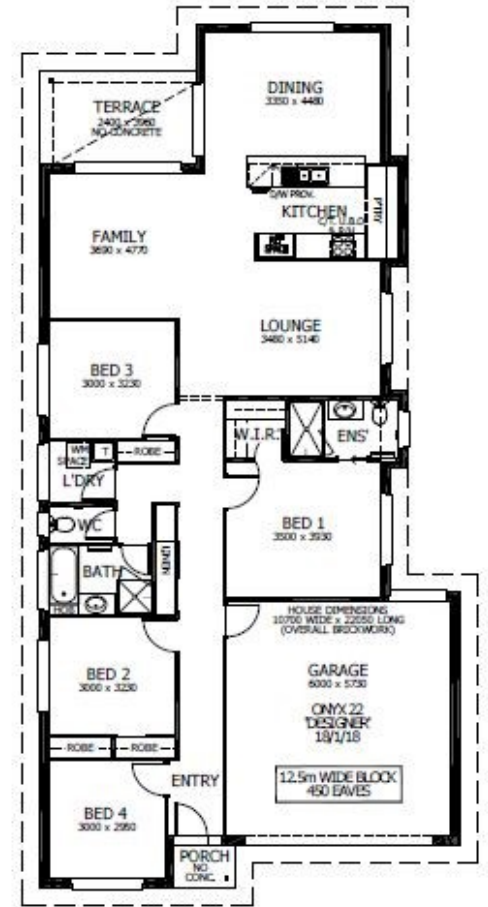
Onyx 22 - Designer

Lot 30 Burril Street, Bellbird

Floor Area: 201.01m² or 21.61sq Block Size: 600m²

Package Inclusions:

- Prestige Façade
- Covered Terrace
- Open Plan Living
- Split System Air Conditioning
- All Internal Floor Coverings
- Perry Homes "Prestige Inclusions Package"
- Upgraded Designer Kitchen with Stainless Steel Appliances
- Flyscreens to all windows & sliding doors
- Concrete Allowance Driveway, Porch and Terrace
- Wall mounted clothes line
- Letter box and TV antenna with booster
- Site Works & Basix allowance of \$30,000 **subject to Contour Survey*



Lisa Simmonds-Webb

0458 169 805

lisa.simmondswebb@perryhomes.com.au

www.hunterregionhouseandland.com.au



Façade upgrade available as an optional extra



Image indicative only

Disclaimer

Due care has been taken with the siting, design and pricing of the proposed dwelling based upon current information and is correct at time of publication. This however, may change as a result of other influences such as; developer covenants, local, state or federal government requirements etc. Also, undetermined site conditions such as; tree removal, acoustics, bushfire, rock etc. may be excluded unless otherwise specified. Terms and conditions apply to campaigns and special offers. Plans and images are for illustrative purposes only and may not accurately depict the finished product. Some images may include products which are not supplied by Perry Homes and are used for display purposes only. Perry Homes (Aust) Pty Ltd. QBCC Act Lic. No.718748 NSW Lic No. 110970C