

House & Land package

From

\$439,784

Based on house \$264,784 and land \$172,000

Valid until 31 October 2018



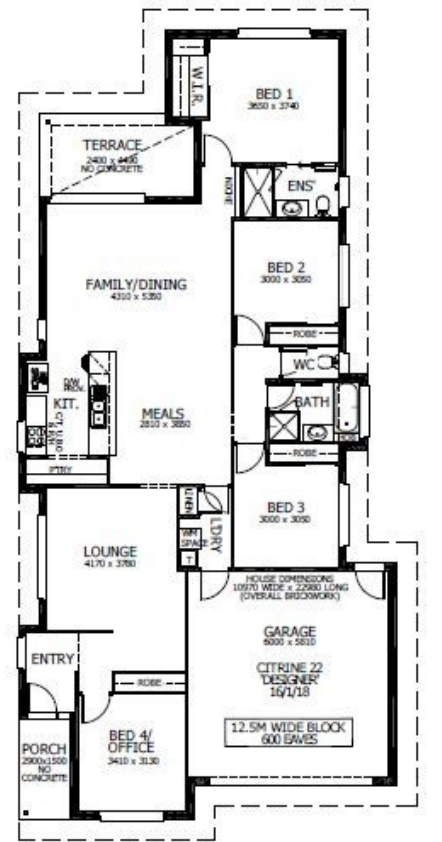
Citrine 22 - Designer

Lot 27 Burril Street, Bellbird

Floor Area: 207.94m² or 22,36sq Block Size: 681m²

Package Inclusions:

- Prestige Façade
- Covered Terrace
- Open Plan Living
- Split System Air Conditioning
- All Internal Floor Coverings
- Perry Homes "Prestige Inclusions Package"
- Upgraded Designer Kitchen with Stainless Steel Appliances
- Flyscreens to all windows & sliding doors
- Concrete Allowance Driveway, Porch and Terrace
- Wall mounted clothes line
- Letter box and TV antenna
- Site Works & Basix allowance of \$30,000 **subject to Contour Survey*



Noel Simmonds

02 4021 1680

noel.simmonds@perryhomes.com.au

www.hunterregionhouseandland.com.au



Tempo façade shown, available as an upgrade

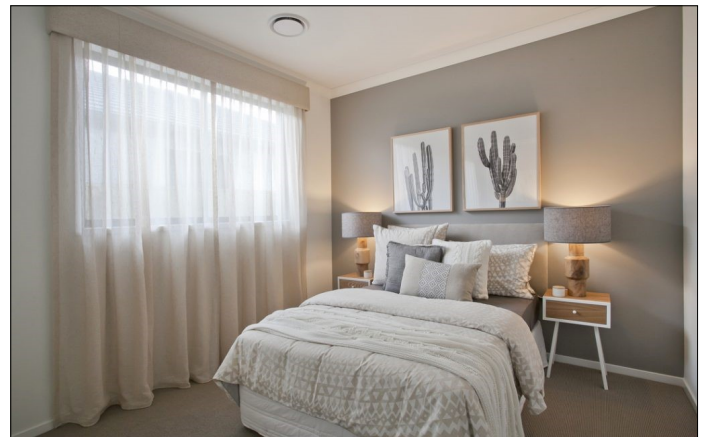


Image indicative only

Disclaimer

Due care has been taken with the siting, design and pricing of the proposed dwelling based upon current information and is correct at time of publication. This however, may change as a result of other influences such as; developer covenants, local, state or federal government requirements etc. Also, undetermined site conditions such as; tree removal, acoustics, bushfire, rock etc. may be excluded unless otherwise specified. Terms and conditions apply to campaigns and special offers. Plans and images are for illustrative purposes only and may not accurately depict the finished product. Some images may include products which are not supplied by Perry Homes and are used for display purposes only. Perry Homes (Aust) Pty Ltd. QBCC Act Lic. No.718748 NSW Lic No. 110970C